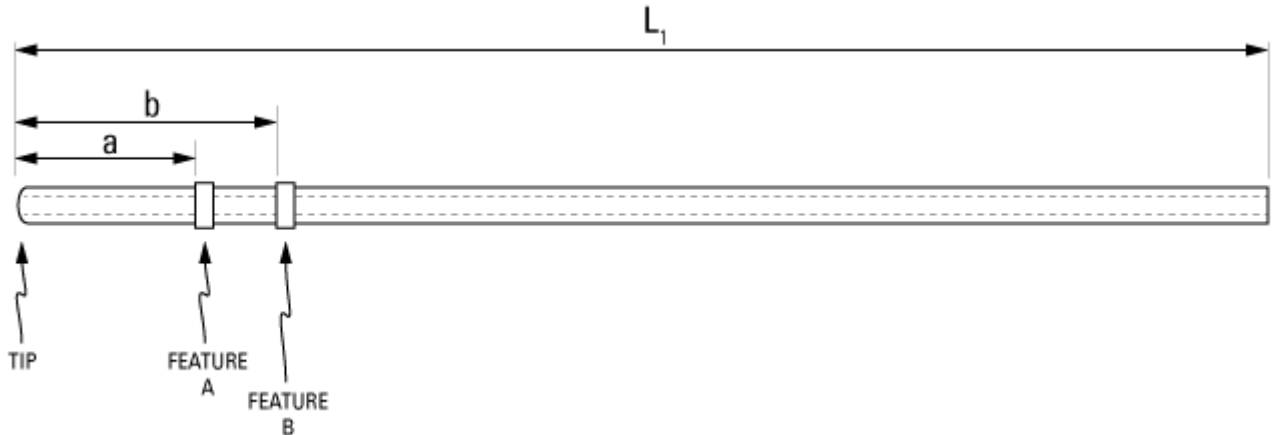


Part Number: **C30PU-RPV1435**



not to scale

Full Description: Catheter for rat portal vein, PU 3Fr 20cm, collars @ 0.7, 5cm. Fits 22ga.

Unit: each **Pouch Desc:** Rat PVC 3Fr PU 20cm **Pouch:** 4x10

Approx Dead Vol: 65 μ L **Connects to:** 22ga **EO Sterilized:**

Intended Species: rat **Vessel:** portal vein

Usage Notes: Consistent with procedure described in "Manual of Microsurgery on the Laboratory Rat," van Dongen and Remie, ISBN 0-444-81139-7, chapter 11.

TUBING

Tip: rounded **Length 1** **Length 2**
L1: 20 cm **L2:** cm
Material (IDxOD): PU 3Fr (.62x1.02 \pm .03mm) **Material (IDxOD):** cm

FEATURES

<i>Distal (tip) end</i>		<i>Location</i>	<i>Fixed</i>
Feature A:	Small silicone collar for 3Fr (1.3mm OD), 2mm wide	a: 0.7 cm	<input type="checkbox"/>
Feature B:	Small silicone collar for 3Fr (1.3mm OD), 2mm wide	b: 5.0 cm	<input type="checkbox"/>
Feature C:		c: cm	<input type="checkbox"/>
<i>Proximal end</i>			
Feature Z:		z: cm	<input type="checkbox"/>
Feature Y:		y: cm	<input type="checkbox"/>
Feature X:		x: cm	<input type="checkbox"/>

PARTS ADDED TO POUCH

Part 1: **Part 2:**