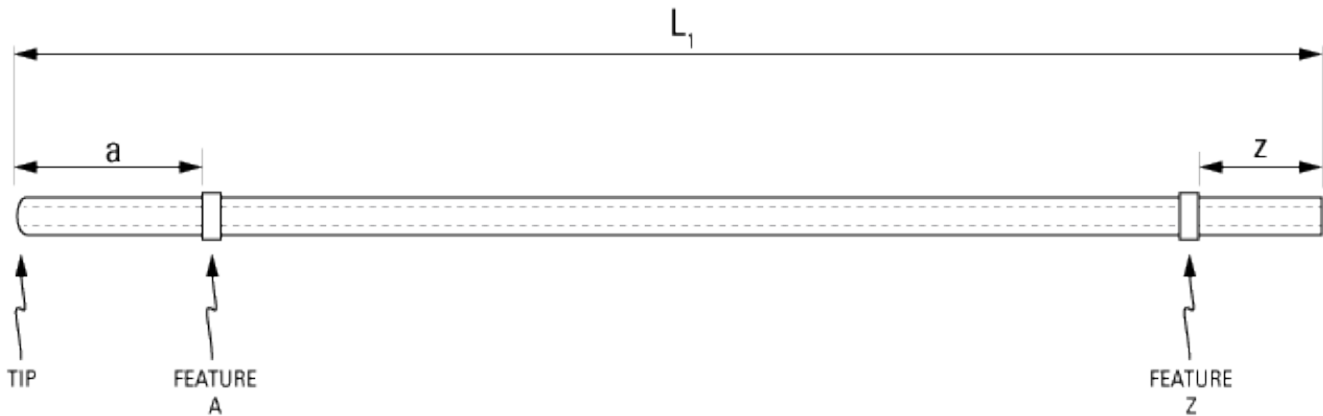


Part Number: **C30PU-RJV1631**



not to scale

Full Description: Catheter for rat jugular vein, PU 3Fr 13cm, collars @ 2.5 and 11.5cm, rounded tip. Fits 22ga.

Unit: Pouch Desc: Pouch:

Approx Dead Vol: μ L Connects to: EO Sterilized:

Intended Species: Vessel:

Usage Notes:

TUBING

Tip: Length 1 L1: cm Length 2 L2: cm
 Material (IDxOD): Material (IDxOD):

FEATURES

Distal (tip) end		Location	Fixed
Feature A:	<input type="text" value="Small silicone collar for 3Fr (1.3mm OD), 2mm wide"/>	a: <input type="text" value="2.5"/> cm	<input type="checkbox"/>
Feature B:	<input type="text"/>	b: <input type="text"/> cm	<input type="checkbox"/>
Feature C:	<input type="text"/>	c: <input type="text"/> cm	<input type="checkbox"/>
Proximal end			
Feature Z:	<input type="text" value="Small silicone collar for 3Fr (1.3mm OD), 2mm wide"/>	z: <input type="text" value="1.5"/> cm	<input type="checkbox"/>
Feature Y:	<input type="text"/>	y: <input type="text"/> cm	<input type="checkbox"/>
Feature X:	<input type="text"/>	x: <input type="text"/> cm	<input type="checkbox"/>

PARTS ADDED TO POUCH

Part 1: Part 2: