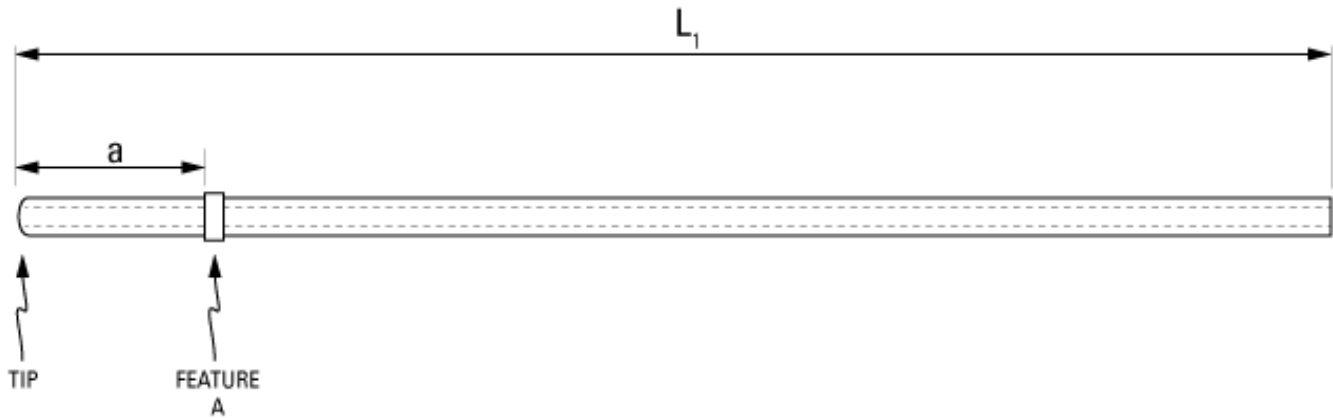


Part Number: **C30PU-RJV1611**



*not to scale*

**Full Description:** Catheter for rat jugular vein, PU 3Fr 20cm, collar @ 3.8cm. 22ga luer stub.

**Unit:** each **Pouch Desc:** Rat JVC PU 3Fr 20cm **Pouch:** 3x7.5

**Approx Dead Vol:** 65  $\mu$ L **Connects to:** 22ga **EO Sterilized:**

**Intended Species:** rat **Vessel:** jugular vein

**Usage Notes:** RRSSC design

## TUBING

**Tip:** rounded **Length 1** **Length 2**  
**L1:** 20 cm **L2:** cm  
**Material (IDxOD):** PU 3Fr (.62x1.02 $\pm$ .03mm) **Material (IDxOD):** cm

## FEATURES

Distal (tip) end		Location	Fixed
Feature A:	Small silicone collar for 3Fr (1.3mm OD), 2mm wide	a: 3.8 cm	<input type="checkbox"/>
Feature B:		b: cm	<input type="checkbox"/>
Feature C:		c: cm	<input type="checkbox"/>
Proximal end			
Feature Z:		z: cm	<input type="checkbox"/>
Feature Y:		y: cm	<input type="checkbox"/>
Feature X:		x: cm	<input type="checkbox"/>

## PARTS ADDED TO POUCH

**Part 1:** LS22 - 22ga luer stub **Part 2:** cm