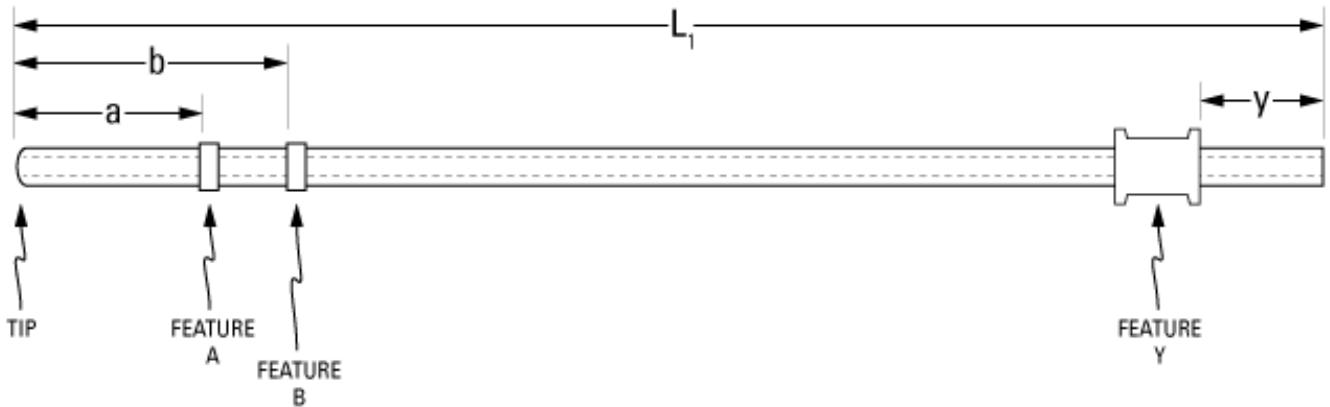


Part Number: **C30PU-RJV1608**



not to scale

Full Description: Catheter for rat jugular vein, PU 3Fr 25cm, collars @ 4, 4.5cm, spool collar. Fits 22ga.

Unit: each **Pouch Desc:** Rat JVC PU 3Fr 25cm **Pouch:** 4x10

Approx Dead Vol: 80 μ L **Connects to:** 22ga **EO Sterilized:**

Intended Species: rat **Vessel:** jugular vein

Usage Notes:

TUBING

Tip: rounded **Length 1** L1: 25 cm **Length 2** L2: cm
Material (IDxOD): PU 3Fr (.62x1.02 \pm .03mm) **Material (IDxOD):** cm

FEATURES

Distal (tip) end		Location	Fixed
Feature A:	Small silicone collar for 3Fr (1.3mm OD), 2mm wide	a: 4.0 cm	<input type="checkbox"/>
Feature B:	Small silicone collar for 3Fr (1.3mm OD), 2mm wide	b: 4.5 cm	<input type="checkbox"/>
Feature C:		c: cm	<input type="checkbox"/>
Proximal end			
Feature Z:		z: cm	<input type="checkbox"/>
Feature Y:	PE spool collar for 3Fr (1.6mm OD), 4 mm wide	y: 2.4 cm	<input type="checkbox"/>
Feature X:		x: cm	<input type="checkbox"/>

PARTS ADDED TO POUCH

Part 1: **Part 2:**