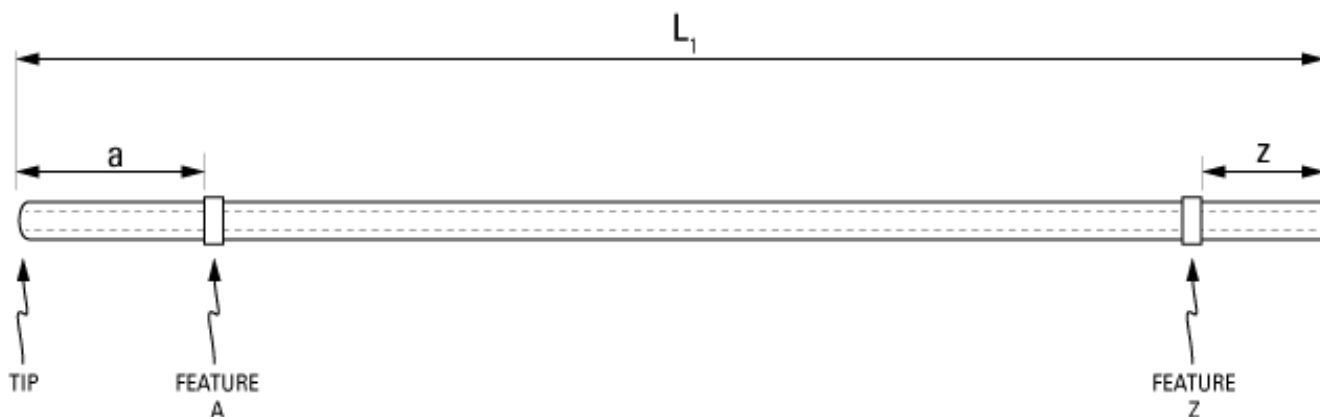


Part Number: **C30PU-RJV1601**



*not to scale*

Full Description: Catheter for rat jugular vein, PU 3Fr 12cm, collars @ 2.2, 10.5cm. Fits 22ga.

Unit:  Pouch Desc:  Pouch:

Approx Dead Vol:   $\mu$ L Connects to:  EO Sterilized:

Intended Species:  Vessel:

Usage Notes:

## TUBING

Tip:  Length 1:  cm Material (IDxOD):  Length 2:  cm Material (IDxOD):

## FEATURES

Distal (tip) end		Location	Fixed
Feature A:	<input type="text" value="Small silicone collar for 3Fr (1.3mm OD), 2mm wide"/>	a: <input type="text" value="2.2"/> cm	<input type="checkbox"/>
Feature B:	<input type="text"/>	b: <input type="text"/> cm	<input type="checkbox"/>
Feature C:	<input type="text"/>	c: <input type="text"/> cm	<input type="checkbox"/>
Proximal end			
Feature Z:	<input type="text" value="Small silicone collar for 3Fr (1.3mm OD), 2mm wide"/>	z: <input type="text" value="1.5"/> cm	<input type="checkbox"/>
Feature Y:	<input type="text"/>	y: <input type="text"/> cm	<input type="checkbox"/>
Feature X:	<input type="text"/>	x: <input type="text"/> cm	<input type="checkbox"/>

## PARTS ADDED TO POUCH

Part 1:  Part 2: