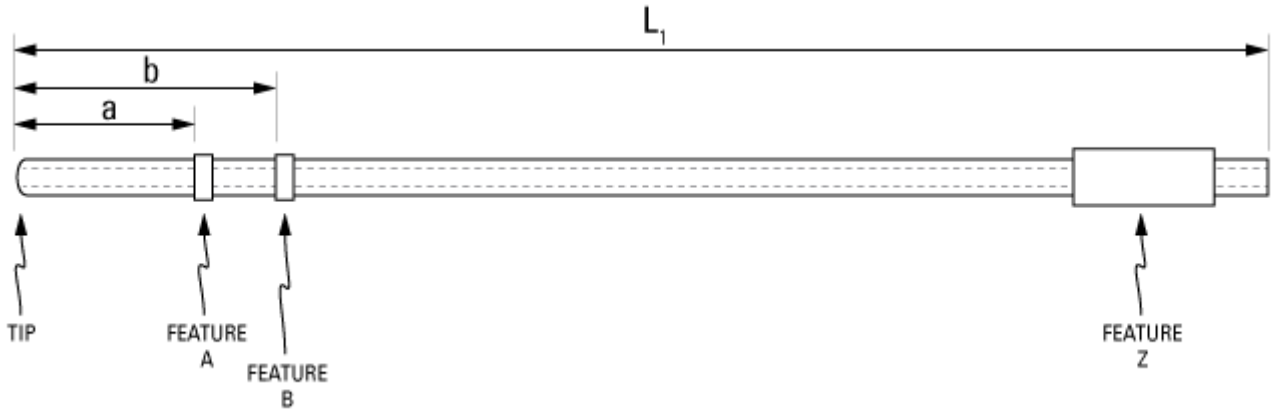


Part Number: **C30PU-RJV1507**



not to scale

Full Description: Catheter for rat jugular vein, PU 3Fr 9cm, collars @ 1.5, 3.0cm, sleeve. Fits 22ga.

Unit: **Pouch Desc:** **Pouch:**

Approx Dead Vol: μ L **Connects to:** **EO Sterilized:**

Intended Species: **Vessel:**

Usage Notes:

TUBING

Tip: *Length 1* cm *Length 2* cm
Material (IDxOD):

FEATURES

<i>Distal (tip) end</i>		<i>Location</i>	<i>Fixed</i>
Feature A:	<input type="text" value="Small silicone collar for 3Fr (1.3mm OD), 2mm wide"/>	a: <input type="text" value="1.5"/> cm	<input type="checkbox"/>
Feature B:	<input type="text" value="Small silicone collar for 3Fr (1.3mm OD), 2mm wide"/>	b: <input type="text" value="3.0"/> cm	<input type="checkbox"/>
Feature C:	<input type="text"/>	c: <input type="text"/> cm	<input type="checkbox"/>
<i>Proximal end</i>			
Feature Z:	<input type="text" value="Silicone sleeve for 3Fr (2.2mm OD), 15mm long"/>	z: <input type="text"/> cm	<input type="checkbox"/>
Feature Y:	<input type="text"/>	y: <input type="text"/> cm	<input type="checkbox"/>
Feature X:	<input type="text"/>	x: <input type="text"/> cm	<input type="checkbox"/>

PARTS ADDED TO POUCH

Part 1: **Part 2:**