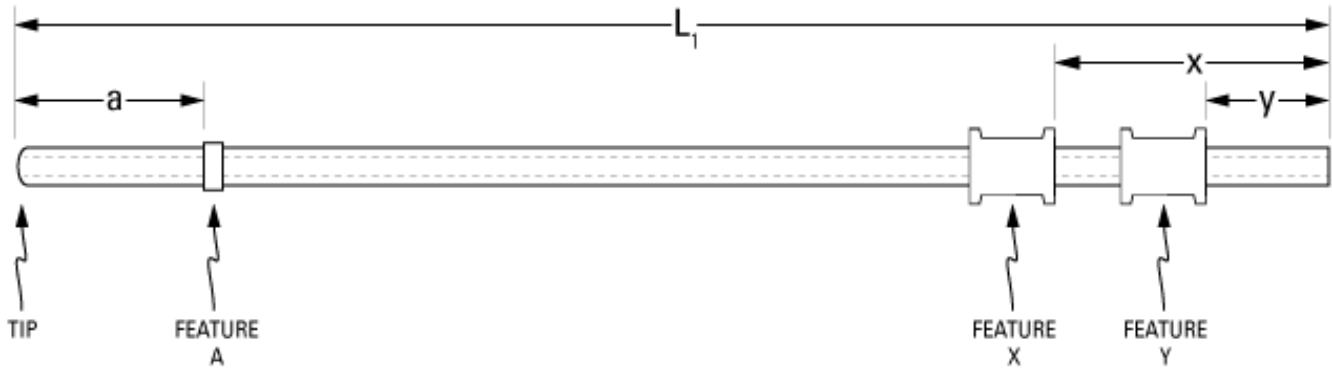


Part Number: **C30PU-RJV1506**



not to scale

Full Description: Catheter for rat jugular vein, PU 3Fr 14cm, collar @ 2.6cm, 2 spool collars

Unit: each **Pouch Desc:** Rat JVC PU 3Fr 14cm **Pouch:** 3x7.5

Approx Dead Vol: 45 μ L **Connects to:** 22ga **EO Sterilized:**

Intended Species: rat **Vessel:** jugular vein

Usage Notes:

TUBING

Tip: rounded *Length 1* *Length 2*
L1: 14 cm **L2:** cm
Material (IDxOD): PU 3Fr (.62x1.02 \pm .03mm) **Material (IDxOD):**

FEATURES

<i>Distal (tip) end</i>		<i>Location</i>	<i>Fixed</i>
Feature A:	Small silicone collar for 3Fr (1.3mm OD), 2mm wide	a: 2.6 cm	<input type="checkbox"/>
Feature B:		b: cm	<input type="checkbox"/>
Feature C:		c: cm	<input type="checkbox"/>
<i>Proximal end</i>			
Feature Z:		z: cm	<input type="checkbox"/>
Feature Y:	PE spool collar for 3Fr (1.6mm OD), 4 mm wide	y: 0.5 cm	<input type="checkbox"/>
Feature X:	PE spool collar for 3Fr (1.6mm OD), 4 mm wide	x: 1 cm	<input type="checkbox"/>

PARTS ADDED TO POUCH

Part 1: **Part 2:**