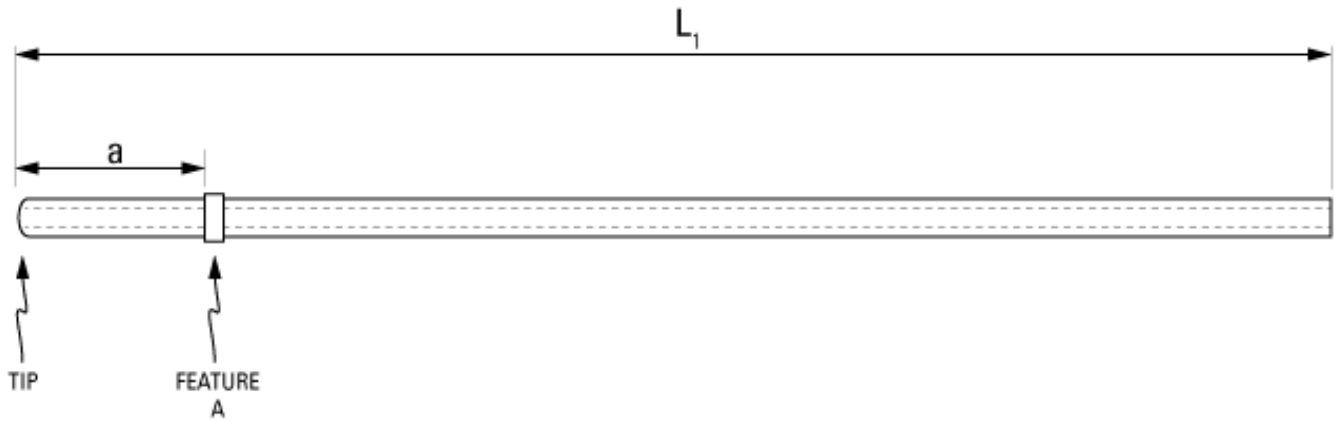


Part Number: **C30PU-RJV1428**



*not to scale*

**Full Description:** Catheter for rat jugular vein, PU 3Fr 60cm, fixed collar @ 4.5cm. Fits 22ga.

**Unit:**  **Pouch Desc:**  **Pouch:**

**Approx Dead Vol:**   $\mu$ L **Connects to:**  **EO Sterilized:**

**Intended Species:**  **Vessel:**

**Usage Notes:**

## TUBING

**Tip:**  *Length 1* **L1:**  cm *Length 2* **L2:**  cm  
**Material (IDxOD):**  **Material (IDxOD):**

## FEATURES

<i>Distal (tip) end</i>		<i>Location</i>	<i>Fixed</i>
<b>Feature A:</b>	<input type="text" value="Small silicone collar for 3Fr (1.3mm OD), 2mm wide"/>	<b>a:</b> <input type="text" value="4.5"/> cm	<input checked="" type="checkbox"/>
<b>Feature B:</b>	<input type="text"/>	<b>b:</b> <input type="text"/> cm	<input type="checkbox"/>
<b>Feature C:</b>	<input type="text"/>	<b>c:</b> <input type="text"/> cm	<input type="checkbox"/>
<i>Proximal end</i>			
<b>Feature Z:</b>	<input type="text"/>	<b>z:</b> <input type="text"/> cm	<input type="checkbox"/>
<b>Feature Y:</b>	<input type="text"/>	<b>y:</b> <input type="text"/> cm	<input type="checkbox"/>
<b>Feature X:</b>	<input type="text"/>	<b>x:</b> <input type="text"/> cm	<input type="checkbox"/>

## PARTS ADDED TO POUCH

**Part 1:**  **Part 2:**