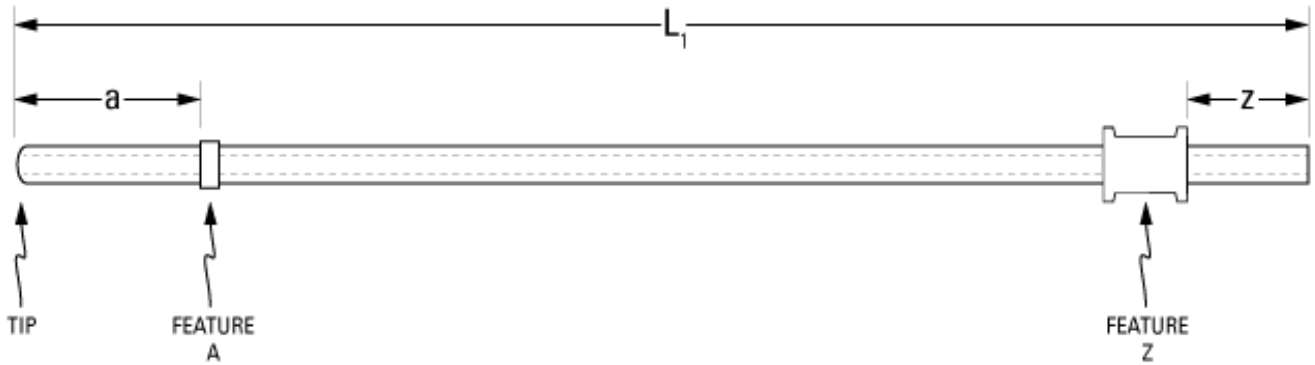


Part Number: **C30PU-RJV1422**



*not to scale*

**Full Description:** Catheters for rat jugular vein, (2) PU 3Fr 14cm, collar @ 2.5cm, spool @ 8.5cm. Red and white PinPorts, 2 injectors.

**Unit:** each **Pouch Desc:** Rat JVC 3Fr PU 14cm 2ea **Pouch:** 3x7.5

**Approx Dead Vol:** 40  $\mu$ L **Connects to:** 22ga **EO Sterilized:**

**Intended Species:** rat **Vessel:** jugular vein

**Usage Notes:** for dual jugular catheterizations

## TUBING

**Tip:** rounded **Length 1** **Length 2**  
**L1:** 14 cm **L2:** cm  
**Material (IDxOD):** PU 3Fr (.62x1.02 $\pm$ .03mm) **Material (IDxOD):** cm

## FEATURES

<i>Distal (tip) end</i>		<i>Location</i>	<i>Fixed</i>
<b>Feature A:</b>	Small silicone collar for 3Fr (1.3mm OD), 2mm wide	a: 2.5 cm	<input type="checkbox"/>
<b>Feature B:</b>		b: cm	<input type="checkbox"/>
<b>Feature C:</b>		c: cm	<input type="checkbox"/>
<i>Proximal end</i>			
<b>Feature Z:</b>	PE spool collar for 3Fr (1.6mm OD), 4 mm wide	z: 5.5 cm	<input type="checkbox"/>
<b>Feature Y:</b>		y: cm	<input type="checkbox"/>
<b>Feature X:</b>		x: cm	<input type="checkbox"/>

## PARTS ADDED TO POUCH

**Part 1:** 2 PinPorts: 22ga red, 22ga white **Part 2:** 2 PNP3M injectors