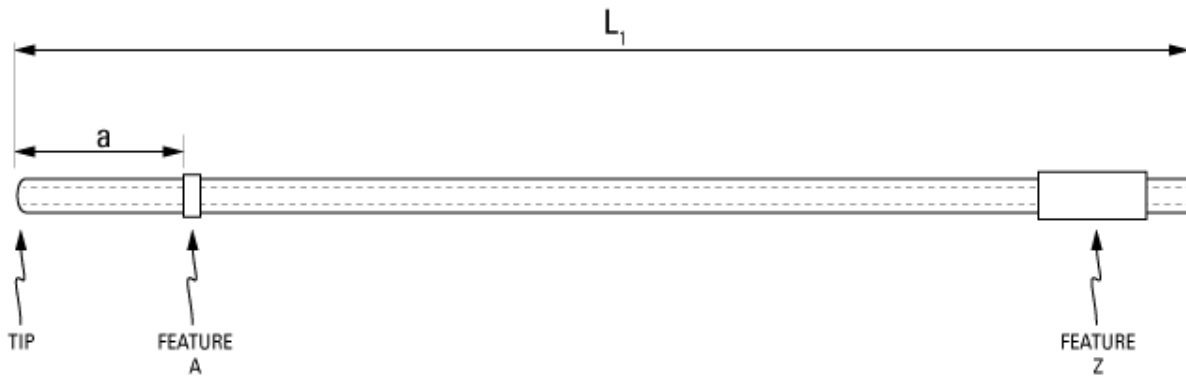


Part Number: **C30PU-RJV1420**



not to scale

Full Description: Catheter for rat jugular vein, PU 3Fr 10cm, collar @ 3.0cm, sleeve. Fits 22ga.

Unit: **Pouch Desc:** **Pouch:**

Approx Dead Vol: μ L **Connects to:** **EO Sterilized:**

Intended Species: **Vessel:**

Usage Notes:

TUBING

Tip: *Length 1* **L1:** cm *Length 2* **L2:** cm
Material (IDxOD): **Material (IDxOD):**

FEATURES

Distal (tip) end

		<i>Location</i>	<i>Fixed</i>
Feature A:	<input type="text" value="Small silicone collar for 3Fr (1.3mm OD), 2mm wide"/>	a: <input type="text" value="3.0"/> cm	<input type="checkbox"/>
Feature B:	<input type="text"/>	b: <input type="text"/> cm	<input type="checkbox"/>
Feature C:	<input type="text"/>	c: <input type="text"/> cm	<input type="checkbox"/>

Proximal end

Feature Z:	<input type="text" value="Silicone sleeve for 3Fr (2.2mm OD), 15mm long"/>	z: <input type="text"/> cm	<input type="checkbox"/>
Feature Y:	<input type="text"/>	y: <input type="text"/> cm	<input type="checkbox"/>
Feature X:	<input type="text"/>	x: <input type="text"/> cm	<input type="checkbox"/>

PARTS ADDED TO POUCH

Part 1: **Part 2:**