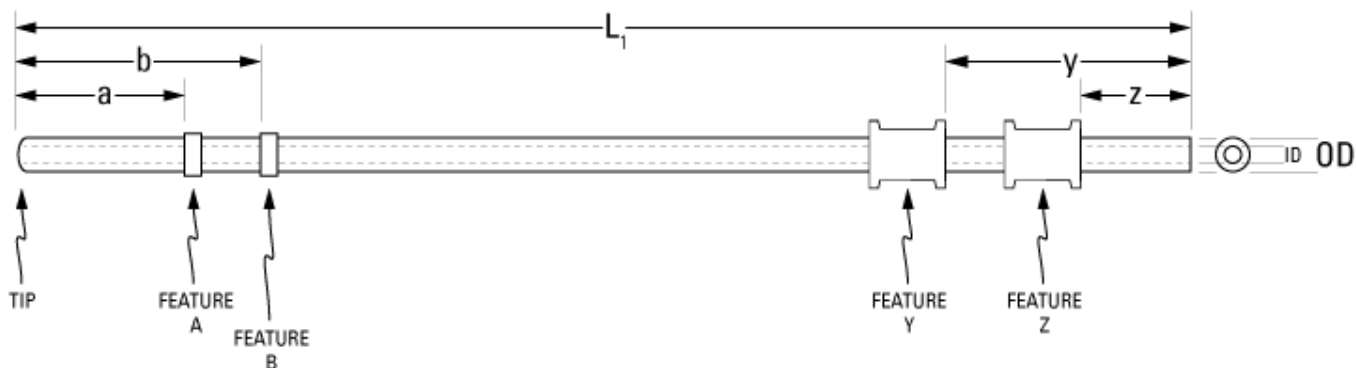


Part Number: **C30PU-RJV1304P**



*not to scale*

**Full Description:** Catheter for rat jugular vein, PU 3Fr 15cm, collars @ 2.0, 2.5cm, 2 PE dumbbells, 22ga PinPort

**Unit:** each **Pouch Desc:** Rat JVC 3Fr PU 15cm **Pouch:** 4x10

**Approx Dead Vol:** 45  $\mu$ L **Connects to:** 22ga **EO Sterilized:**

**Intended Species:** rat **Vessel:** jugular vein

**Usage Notes:**

## TUBING

**Tip:** rounded **Length 1** **Length 2**  
**L1:** 15 cm **L2:** cm  
**Material (IDxOD):** PU 3Fr (.62x1.02 $\pm$ .03mm) **Material (IDxOD):** cm

## FEATURES

<i>Distal (tip) end</i>		<i>Location</i>	<i>Fixed</i>
<b>Feature A:</b>	Small silicone collar for 3Fr (1.3mm OD), 2mm wide	a: 2.0 cm	<input type="checkbox"/>
<b>Feature B:</b>	Small silicone collar for 3Fr (1.3mm OD), 2mm wide	b: 2.5 cm	<input type="checkbox"/>
<b>Feature C:</b>		c: cm	<input type="checkbox"/>
<i>Proximal end</i>			
<b>Feature Z:</b>	PE dumbbell anchor for 3Fr (1.6mm OD), 4 mm wide	z: 2.0 cm	<input type="checkbox"/>
<b>Feature Y:</b>	PE dumbbell anchor for 3Fr (1.6mm OD), 4 mm wide	y: 3.0 cm	<input type="checkbox"/>
<b>Feature X:</b>		x: cm	<input type="checkbox"/>

## PARTS ADDED TO POUCH

**Part 1:** PNP3F22 white 22ga PinPort **Part 2:** PNP3M PinPort injector