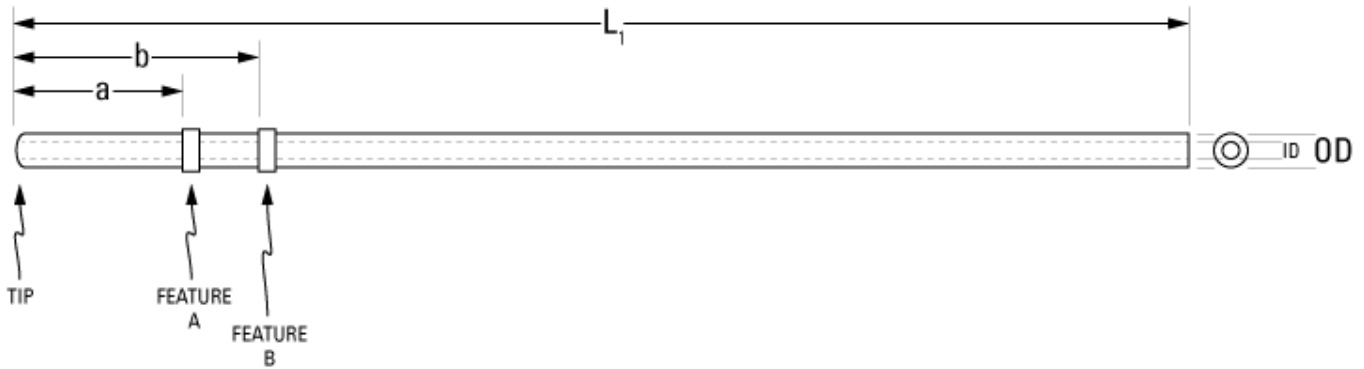


Part Number: **C30PU-RJV1303P**



not to scale

Full Description: Catheter for rat jugular vein, PU 3Fr 30cm, collars @ 2.5, 3.0cm, 22ga PinPort

Unit: each **Pouch Desc:** Rat JVC 3Fr PU 30cm w/PP **Pouch:** 4x10

Approx Dead Vol: 90 μ L **Connects to:** 22ga **EO Sterilized:**

Intended Species: rat **Vessel:** Jugular vein

Usage Notes:

TUBING

Tip: rounded *Length 1* *Length 2*
 L1: 30 cm L2: cm
Material (IDxOD): PU 3Fr (.62x1.02 \pm .03mm) **Material (IDxOD):**

FEATURES

<i>Distal (tip) end</i>		<i>Location</i>	<i>Fixed</i>
Feature A:	Small silicone collar for 3Fr (1.3mm OD), 2mm wide	a: 2.5 cm	<input type="checkbox"/>
Feature B:	Small silicone collar for 3Fr (1.3mm OD), 2mm wide	b: 3.0 cm	<input type="checkbox"/>
Feature C:		c: cm	<input type="checkbox"/>
<i>Proximal end</i>			
Feature Z:		z: cm	<input type="checkbox"/>
Feature Y:		y: cm	<input type="checkbox"/>
Feature X:		x: cm	<input type="checkbox"/>

PARTS ADDED TO POUCH

Part 1: PNP3F22 white 22ga PinPort **Part 2:** PNP3M PinPort injector