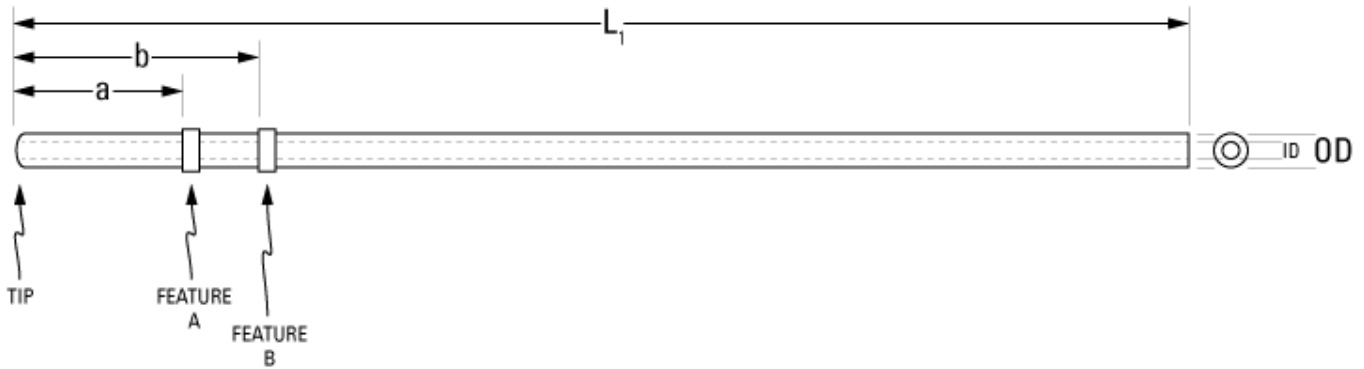


Part Number: **C30PU-RBL1301**



not to scale

Full Description: Catheter for rat bladder, PU 3Fr 25cm,, collars @ 0.2, 0.5cm. Fits 22ga.

Unit: each **Pouch Desc:** Rat bladder cath PU 3Fr 25cm **Pouch:** 4x10

Approx Dead Vol: 75 μ L **Connects to:** 22ga **EO Sterilized:**

Intended Species: rat **Vessel:** bladder

Usage Notes:

TUBING

Tip: rounded *Length 1* *Length 2*
L1: 25 cm **L2:** cm
Material (IDxOD): PU 3Fr (.62x1.02 \pm .03mm) **Material (IDxOD):**

FEATURES

<i>Distal (tip) end</i>		<i>Location</i>	<i>Fixed</i>
Feature A:	Small silicone collar for 3Fr (1.3mm OD), 2mm wide	a: 0.2 cm	<input type="checkbox"/>
Feature B:	Small silicone collar for 3Fr (1.3mm OD), 2mm wide	b: 0.5 cm	<input type="checkbox"/>
Feature C:		c: cm	<input type="checkbox"/>
<i>Proximal end</i>			
Feature Z:		z: cm	<input type="checkbox"/>
Feature Y:		y: cm	<input type="checkbox"/>
Feature X:		x: cm	<input type="checkbox"/>

PARTS ADDED TO POUCH

Part 1: **Part 2:**