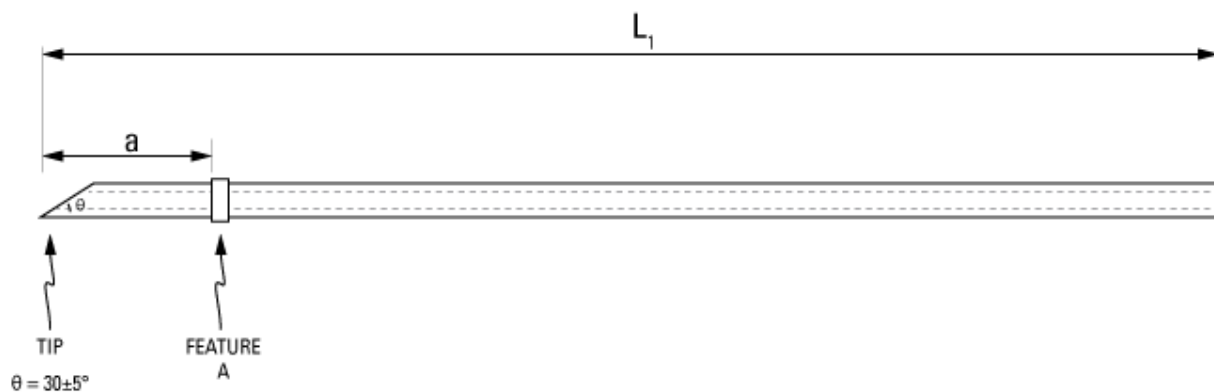


Part Number: **C30PU-RBD1614**



not to scale

Full Description: Catheter for rat bile duct, PU 3Fr 20cm, collar @ 0.7cm. 22ga luer stub.

Unit: each **Pouch Desc:** Rat BDC PU 3Fr 20cm **Pouch:** 3x7.5

Approx Dead Vol: 65 μ L **Connects to:** 22ga **EO Sterilized:**

Intended Species: rat **Vessel:** bile duct

Usage Notes: RRSSC design

TUBING

Tip: beveled **Length 1** **Length 2**
L1: 20 cm **L2:** cm
Material (IDxOD): PU 3Fr (.62x1.02 \pm .03mm) **Material (IDxOD):** cm

FEATURES

Distal (tip) end		Location	Fixed
Feature A:	Small silicone collar for 3Fr (1.3mm OD), 2mm wide	a: 0.7 cm	<input type="checkbox"/>
Feature B:		b: cm	<input type="checkbox"/>
Feature C:		c: cm	<input type="checkbox"/>
Proximal end			
Feature Z:		z: cm	<input type="checkbox"/>
Feature Y:		y: cm	<input type="checkbox"/>
Feature X:		x: cm	<input type="checkbox"/>

PARTS ADDED TO POUCH

Part 1: LS22 - 22ga luer stub **Part 2:** cm