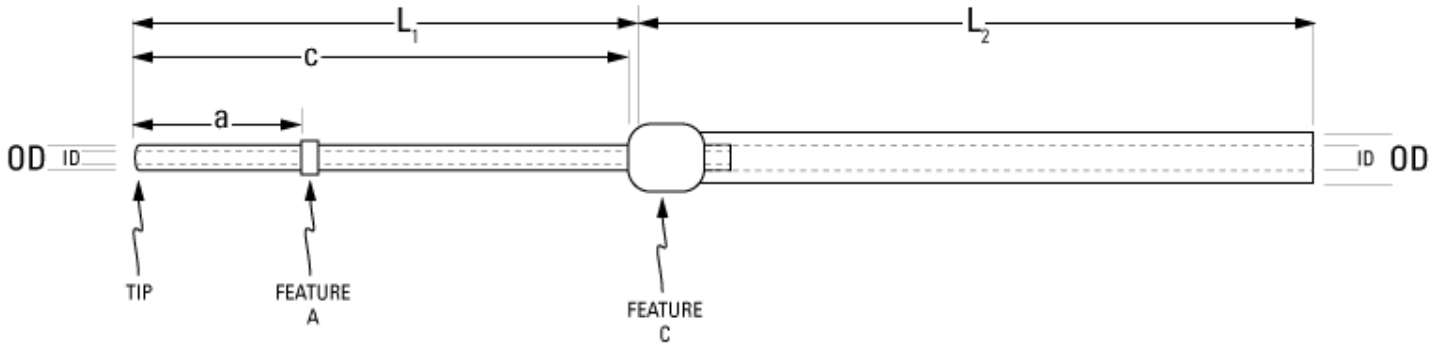


Part Number: **C20PU-RCA1419**



not to scale

Full Description: Catheter for rat carotid artery, PU 2Fr 4cm-024x055 PU 25cm, collar @ 1.5cm. Fits 22ga.

Unit: each **Pouch Desc:** Rat CAC 2Fr-024x055 PU 29cm **Pouch:** 4x10

Approx Dead Vol: 80 μ L **Connects to:** 22ga **EO Sterilized:**

Intended Species: rat **Vessel:** carotid artery

Usage Notes:

TUBING

Tip: rounded **Length 1** **Length 2**
L1: 4 cm **L2:** 25 cm
Material (IDxOD): PU 2Fr (.43x0.69 \pm .03mm) **Material (IDxOD):** VAHBPU-T22 (.61x1.40 \pm .05mm)

FEATURES

<i>Distal (tip) end</i>		<i>Location</i>	<i>Fixed</i>
Feature A:	Small silicone collar for 2Fr (0.9mm OD), 1mm wide	a: 1.5 cm	<input type="checkbox"/>
Feature B:		b: cm	<input type="checkbox"/>
Feature C:	Extra large silicone collar (2.2mm OD), 3mm wide	c: 9.5 cm	<input type="checkbox"/>
<i>Proximal end</i>			
Feature Z:		z: cm	<input type="checkbox"/>
Feature Y:		y: cm	<input type="checkbox"/>
Feature X:		x: cm	<input type="checkbox"/>

PARTS ADDED TO POUCH

Part 1: **Part 2:**