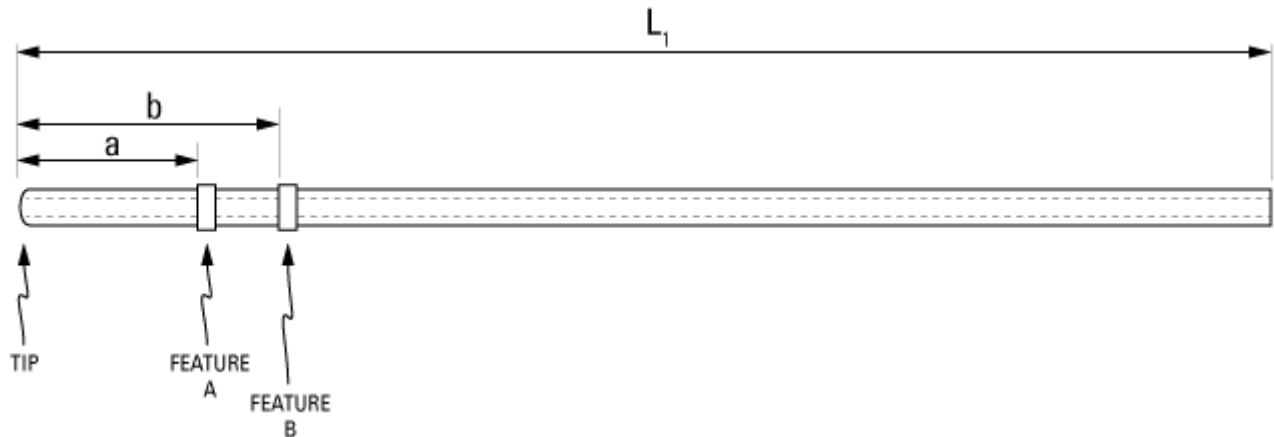


Part Number: **C20PU-MJV1816**



not to scale

Full Description: Catheter for mouse jugular vein, PU 2Fr 10cm, collars @ 1.3, 4.0cm. Fits 25ga.

Unit: each **Pouch Desc:** Mouse JVC 2Fr PU 10cm **Pouch:** 3x7.5

Approx Dead Vol: 15 μ L **Connects to:** 25ga **EO Sterilized:**

Intended Species: mouse **Vessel:** jugular vein

Usage Notes:

TUBING

Tip: rounded **Length 1** **Length 2**
L1: 10 cm **L2:** cm
Material (IDxOD): PU 2Fr (.43x.69 \pm .03mm) **Material (IDxOD):**

FEATURES

<i>Distal (tip) end</i>		<i>Location</i>	<i>Fixed</i>
Feature A:	Small silicone collar for 2Fr (0.9mm OD), 1mm wide	a: 1.3 cm	<input type="checkbox"/>
Feature B:	Long silicone collar for 2Fr (0.9mm OD), 3mm wide	b: 4.0 cm	<input type="checkbox"/>
Feature C:		c: cm	<input type="checkbox"/>
<i>Proximal end</i>			
Feature Z:		z: cm	<input type="checkbox"/>
Feature Y:		y: cm	<input type="checkbox"/>
Feature X:		x: cm	<input type="checkbox"/>

PARTS ADDED TO POUCH

Part 1: **Part 2:**