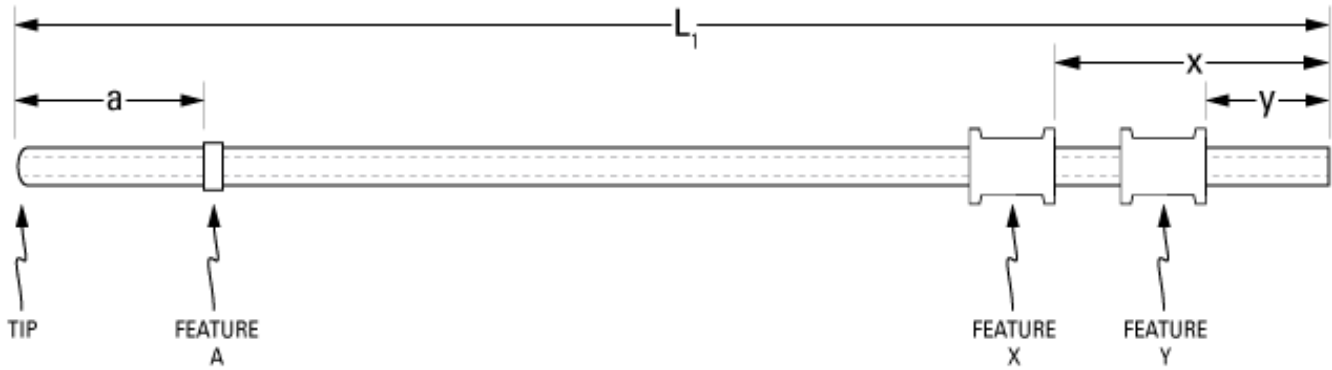


Part Number: **C20PU-MJV1505P**



not to scale

Full Description: Catheter for mouse jugular vein, PU 2Fr 10cm, collar @ 1.3cm, 2 spool collars, 25ga PinPort, injector.

Unit: **Pouch Desc:** **Pouch:**

Approx Dead Vol: μ L **Connects to:** **EO Sterilized:**

Intended Species: **Vessel:**

Usage Notes:

TUBING

Tip: **Length 1** **Length 2**
L1: cm **L2:** cm
Material (IDxOD): **Material (IDxOD):**

FEATURES

Distal (tip) end		Location	Fixed
Feature A:	<input type="text" value="Small silicone collar for 2Fr (0.9mm OD), 1mm wide"/>	a: <input type="text" value="1.3"/> cm	<input type="checkbox"/>
Feature B:	<input type="text"/>	b: <input type="text"/> cm	<input type="checkbox"/>
Feature C:	<input type="text"/>	c: <input type="text"/> cm	<input type="checkbox"/>
Proximal end			
Feature Z:	<input type="text"/>	z: <input type="text"/> cm	<input type="checkbox"/>
Feature Y:	<input type="text" value="PE spool collar for 2Fr (1.5mm OD), 2-3mm wide"/>	y: <input type="text" value="0.5"/> cm	<input type="checkbox"/>
Feature X:	<input type="text" value="PE spool collar for 2Fr (1.5mm OD), 2-3mm wide"/>	x: <input type="text" value="1"/> cm	<input type="checkbox"/>

PARTS ADDED TO POUCH

Part 1: **Part 2:**