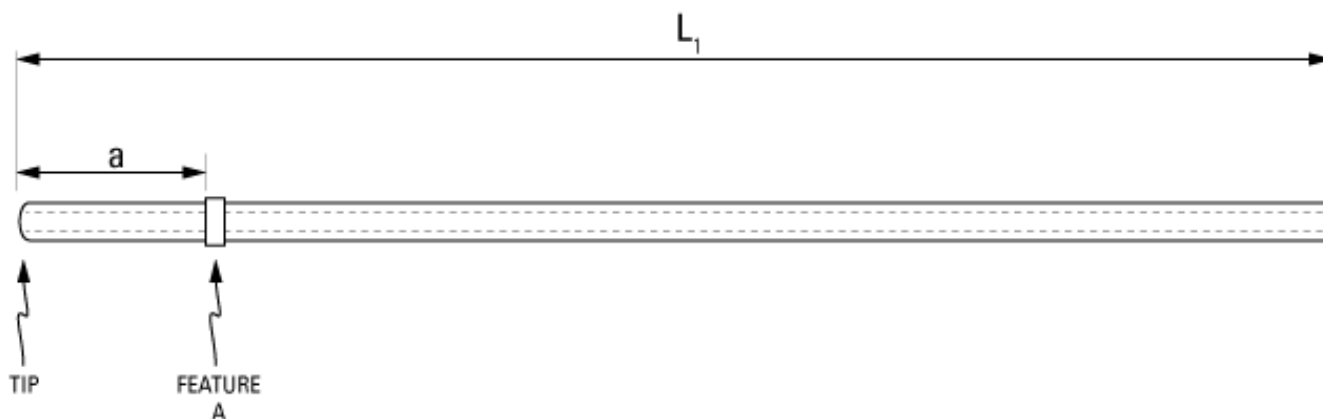


Part Number: **C20PU-MCA1618**



*not to scale*

**Full Description:** Catheter for mouse carotid artery, PU 2Fr 10cm, collar @ 1.0cm. 25ga luer stub.

**Unit:** each **Pouch Desc:** Mouse CAC 2Fr PU 10cm **Pouch:** 3x7.5

**Approx Dead Vol:** 15  $\mu$ L **Connects to:** 25ga **EO Sterilized:**

**Intended Species:** mouse **Vessel:** carotid artery

**Usage Notes:** RRSSC design

## TUBING

**Tip:** rounded **Length 1** **Length 2**  
**L1:** 10 cm **L2:** cm  
**Material (IDxOD):** PU 2Fr (.43x.69±.03mm) **Material (IDxOD):** cm

## FEATURES

Distal (tip) end		Location	Fixed
Feature A:	Small silicone collar for 2Fr (0.9mm OD), 1mm wide	a: 1.0 cm	<input type="checkbox"/>
Feature B:		b: cm	<input type="checkbox"/>
Feature C:		c: cm	<input type="checkbox"/>
Proximal end			
Feature Z:		z: cm	<input type="checkbox"/>
Feature Y:		y: cm	<input type="checkbox"/>
Feature X:		x: cm	<input type="checkbox"/>

## PARTS ADDED TO POUCH

**Part 1:** LS25 - 25ga luer stub **Part 2:**