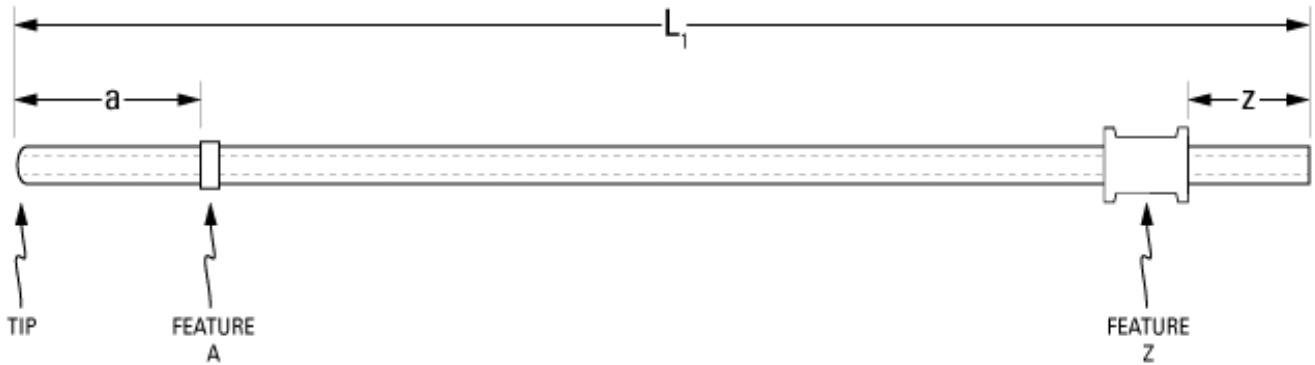


Part Number: **C20PU-MCA1512**



not to scale

Full Description: Catheter for mouse carotid artery, PU 2Fr 6cm, collar @1cm, spool @5cm. Fits 25ga.

Unit: each **Pouch Desc:** Mouse CAC 2Fr PU 6cm **Pouch:** 3x7.5

Approx Dead Vol: 9 μ L **Connects to:** 25ga **EO Sterilized:**

Intended Species: mouse **Vessel:** carotid artery

Usage Notes:

TUBING

Tip: rounded **Length 1** L1: 6 cm **Length 2** L2: cm
Material (IDxOD): PU 2Fr (.43x.69±.03mm) **Material (IDxOD):**

FEATURES

Distal (tip) end		Location	Fixed
Feature A:	Small silicone collar for 2Fr (0.9mm OD), 1mm wide	a: 1.0 cm	<input type="checkbox"/>
Feature B:		b: cm	<input type="checkbox"/>
Feature C:		c: cm	<input type="checkbox"/>
Proximal end			
Feature Z:	PE spool collar for 2Fr (1.5mm OD), 2-3mm wide	z: 1.0 cm	<input type="checkbox"/>
Feature Y:		y: cm	<input type="checkbox"/>
Feature X:		x: cm	<input type="checkbox"/>

PARTS ADDED TO POUCH

Part 1: **Part 2:**