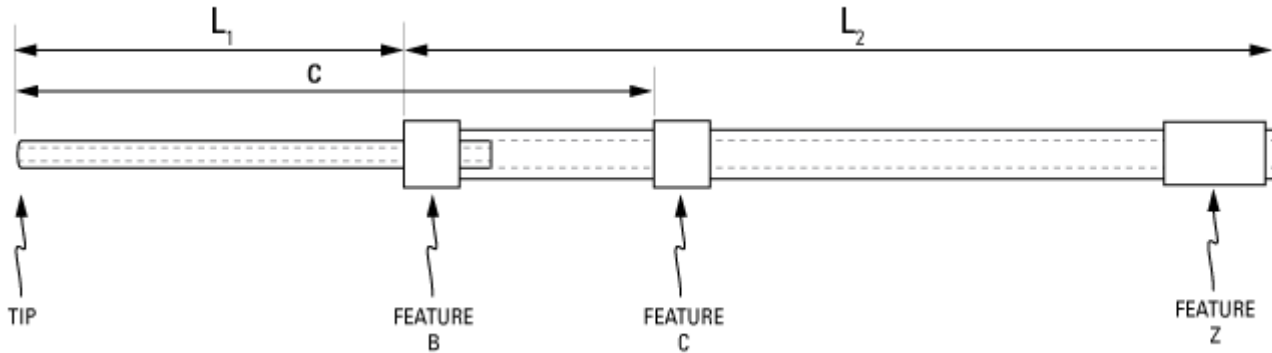


Part Number: **C19PU-RFV1822**



not to scale

Full Description: Catheter for rat femoral vein, PU 1.9Fr 4.5cm, 3Fr 25cm, collars @ 4.5, 7.5cm, sleeve. Fits 22ga.

Unit: **Pouch Desc:** **Pouch:**

Approx Dead Vol: **Connects to:** **EO Sterilized:**

Intended Species: **Vessel:**

Usage Notes:

TUBING

Tip: **Length 1** **Length 2**
L1: **cm** **L2:** **cm**
Material (IDxOD): **Material (IDxOD):**

FEATURES

Distal (tip) end		Location	Fixed
Feature A:	<input type="text"/>	a: <input type="text"/> cm	<input type="checkbox"/>
Feature B:	Large silicone collar for 3Fr (1.7mm OD), 3mm wide	b: <input type="text" value="4.5"/> cm	<input type="checkbox"/>
Feature C:	Small silicone collar for 3Fr (1.3mm OD), 2mm wide	c: <input type="text" value="7.5"/> cm	<input type="checkbox"/>
Proximal end			
Feature Z:	Silicone sleeve for 3Fr (2.2mm OD), 15mm long	z: <input type="text"/> cm	<input type="checkbox"/>
Feature Y:	<input type="text"/>	y: <input type="text"/> cm	<input type="checkbox"/>
Feature X:	<input type="text"/>	x: <input type="text"/> cm	<input type="checkbox"/>

PARTS ADDED TO POUCH

Part 1: **Part 2:**