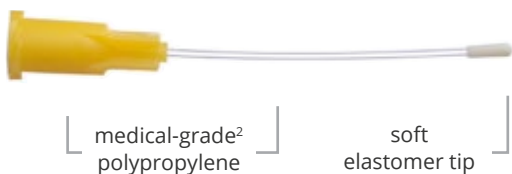


## Flexible Plastic Feeding Tubes (disposable)



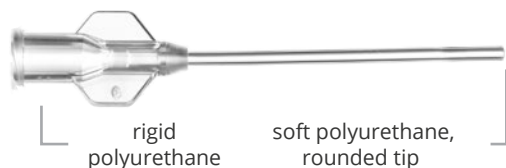
Instech's plastic gavage tubes are flexible to reduce trauma, translucent to visualize delivery, and disposable to eliminate the cost of cleaning and the chance of compound crossover. Flexible tubes are a recommended animal welfare refinement over rigid metal tubes.<sup>1</sup>

### POLYPROPYLENE FEEDING TUBES



The tube and luer hub are made of the same material used to make plastic syringes. The soft, bulb-shaped tip is designed to reduce the chances of inadvertent placement in the trachea and perforation of the esophagus. Available in 13 sizes for rodents ranging from mouse pups to rats to rabbits.

### POLYURETHANE FEEDING TUBES



These tubes feature a larger inner diameter for easier delivery of viscous compounds and a straight tip that wipes clean to reduce the chance of compound aspiration. Available in two sizes, 13ga for rats and 16ga for mice, and a special version for dosing size 9 capsules.



Founded in 1971, Instech is a leader in the design and manufacturing of infusion, sampling and dosing equipment for laboratory animal research. Instech's products are manufactured in the USA. They are available in North America, Europe and India through a direct sales force and elsewhere through a network of approved distributors.

# Feeding Tubes for Rodents

Instech Laboratories, Inc.  
450 South Gravers Road  
Plymouth Meeting, PA 19462  
USA  
TL 800.443.4227  
TL 610.941.0132

# Flexible Plastic Feeding Tubes

PN: 250 pc box  
(PN: 50 pc box)    Tube size  
(IDxOD)    Material

mouse

PUP

FTP-22-25 (FTP-22-25-50)	22ga (0.4x0.7mm)	PP	25mm (1in), 3µL 1.2mm tip diameter
-----------------------------	---------------------	----	---------------------------------------

FTP-20-30 (FTP-20-30-50)	20ga (0.5x0.9mm)	PP	30mm (1.2in), 6µL 1.6mm
-----------------------------	---------------------	----	----------------------------

FTP-20-38 (FTP-20-38-50)	20ga (0.5x0.9mm)	PP	38mm (1.5in), 7µL 1.6mm
-----------------------------	---------------------	----	----------------------------

ADULT

FTPU-16-38 (FTPU-16-38-50)	16ga (1.0x1.6mm)	PU	38mm (1.5in), 30µL 1.6mm
-------------------------------	---------------------	----	-----------------------------

FTP-18-30 (FTP-18-30-50)	18ga (0.7x1.2mm)	PP	30mm (1.2in), 12µL 2.3mm
-----------------------------	---------------------	----	-----------------------------

rat

100-200g

FTP-22-38 (FTP-22-38-50)	22ga (0.4x0.7mm)	PP	38mm (1.5in), 5µL 1.2mm
-----------------------------	---------------------	----	----------------------------

FTP-18-38 (FTP-18-38-50)	18ga (0.7x1.2mm)	PP	38mm (1.5in), 15µL 2.3mm
-----------------------------	---------------------	----	-----------------------------

FTP-18-50 (FTP-18-50-50)	18g (0.7x1.2mm)	PP	50mm (2in), 20µL 2.3mm
-----------------------------	--------------------	----	---------------------------

FTP-15-64 (FTP-15-64-50)	15ga (1.2x1.8mm)	PP	64mm (2.5in), 70µL 3.0mm
-----------------------------	---------------------	----	-----------------------------

FTP-18-75 (FTP-18-75-50)	18ga (0.7x1.2mm)	PP	75mm (3in), 30µL 2.3mm
-----------------------------	---------------------	----	---------------------------

200-300g

FTPU-13-88 (FTPU-13-88-50)	13ga (1.5x2.4mm)	PU	88mm (3.5in), 155µL 2.4mm
-------------------------------	---------------------	----	------------------------------

FTPU-C9-85 <sup>3</sup>	13ga (1.5x2.4mm)	PU, PC	85mm (3.4in), 150µL 3.3mm for size 9 capsules
-------------------------	---------------------	--------	--

FTP-15-78 (FTP-15-78-50)	15ga (1.2x1.8mm)	PP	78mm (3.1in), 90µL 3.0mm
-----------------------------	---------------------	----	-----------------------------

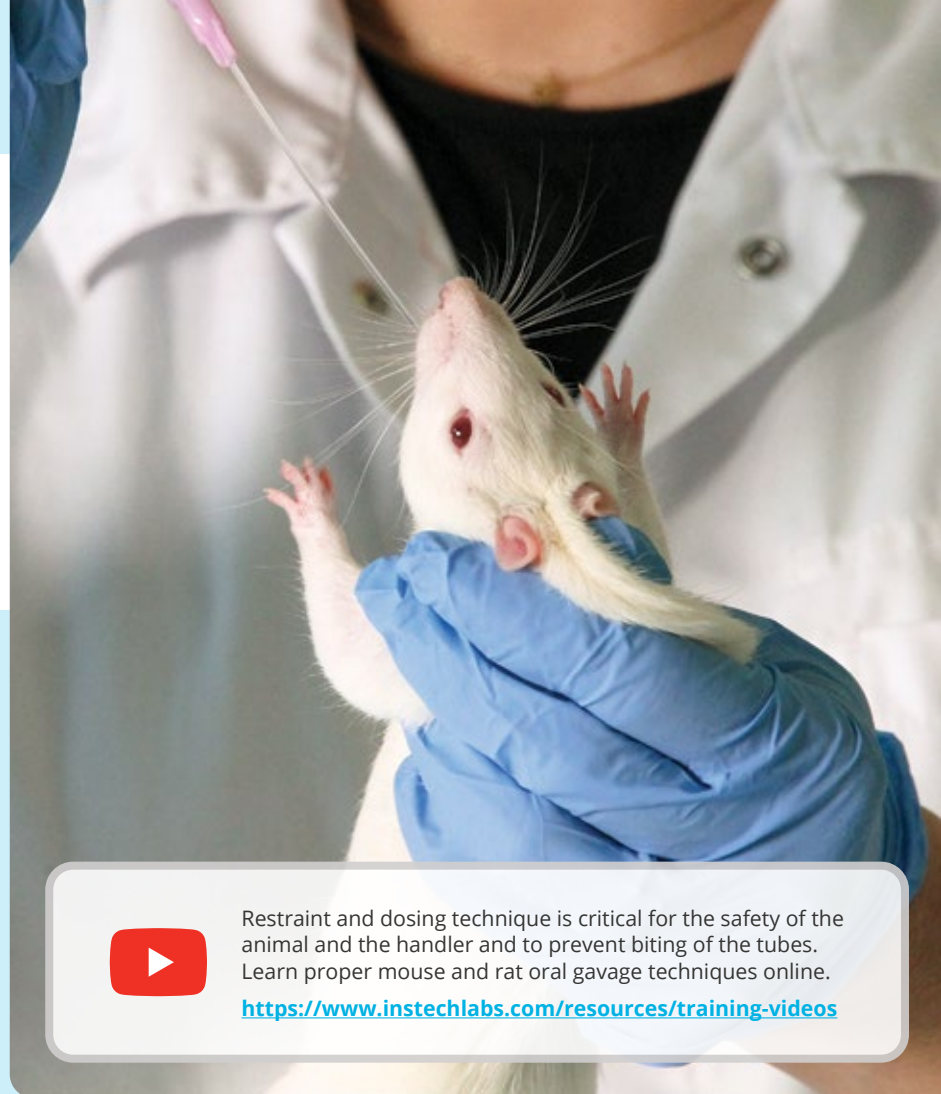
300+g

FTP-15-100 (FTP-15-100-50)	15ga (1.2x1.8mm)	PP	100mm (4in), 110µL 3.0mm
-------------------------------	---------------------	----	-----------------------------

large rodents

FTP-13-90 (FTP-13-90-50)	13ga (1.6x2.4mm)	PP	90mm (3.5in), 180µL 3.5mm
-----------------------------	---------------------	----	------------------------------

FTP-13-150 (FTP-13-150-50)	13ga (1.6x2.4mm)	PP	150mm (6in), 300µL 3.5mm
-------------------------------	---------------------	----	-----------------------------



Restraint and dosing technique is critical for the safety of the animal and the handler and to prevent biting of the tubes. Learn proper mouse and rat oral gavage techniques online.

<https://www.instechlabs.com/resources/training-videos>

<sup>1</sup>Refining procedures for the administration of substances." Report of the BVA/WF/FRAME/RSPCA/UFWA Joint Working Group on Refinement. Laboratory Animals (2001) 35, 1-41.

<sup>2</sup>Polypropylene is USP Class VI certified and compliant with FDA 21 CFR 177.1520. Colorants added to hub are compliant with FDA 21 CFR 178.3297, except black. Elastomer tip is compliant with FDA 21 CFR 177.1210.

<sup>3</sup>Capsule dosers sold in boxes of 20 (10 sterile pouches of two).

**EO** All models sterilized by EtO gas. Plastic tubes packaged five per pouch.

Species suggestions have been compiled based on published papers and anecdotal reports; they are not definitive. Try a variety of sizes to determine what works best for you.

Request free samples at [www.instechlabs.com/sample-request](http://www.instechlabs.com/sample-request)

**MATERIAL KEY**  
PP: polypropylene (tube and hub)  
PU: polyurethane (tube and hub)  
PC: polycarbonate (hub)

Made in the USA.