

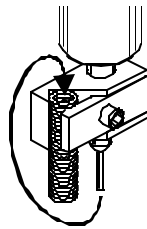
## INSTRUCTIONS FOR USE

# Single Channel Polysulfone Swivels

These precision disposable swivels have been designed to provide unlimited rotation for animals undergoing tethered IV infusion. Like our industry renowned stainless steel models, these swivels feature self-adjusting seals that improve with use to ensure smooth rotation and prevent leaks over the duration of a study.

The swivel should be firmly affixed outside the animal's cage in a position that will give the tethered animal the greatest range of movement.

For best results, use the Instech universal clamp (part no CLAMP)



to attach the swivel to a spring tether from 0.08" to 0.2" OD. Attach the cannula to the bottom of the swivel and loop it around and down through the top of a spring tether as shown.

### Cleaning

If your swivels were purchased sterile they are ready to use. To clean a non-sterile swivel pull back on a syringe to aspirate alcohol or other sterilizing solution through the swivel, then dry the insides by pulling air through it.

### Warnings

Do not heat sterilize. Do not disassemble.

### Specifications

	375/20P	375/22P	375/25P
Inlet and outlet tube gauge	20	22	25
Compatible tubing	PE90	PE50	PE20
Center channel ID	.023"	.016"	.010"
Center channel dead volume	12 $\mu$ l	6 $\mu$ l	2.5 $\mu$ l
Materials in fluid path	Stainless Steel, Teflon		
Dimensions (diameter x length)	.375"x1.69"	.375"x1.69"	.375"x1.69"

### Related Products

See our catalog or website for more information



Infusion Harnesses



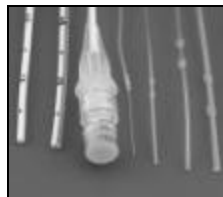
Swivel-Cage Mounts



Swivel-Tether Clamps



Infusion Pumps



Catheters



Access Ports

**INSTECH**

\\iiserver1\newman\prod\docs\disposable swivels\ifu\poly swivel ifu.doc

Instech Laboratories, Inc., 5209 Militia Hill Road, Plymouth Meeting PA 19462-1216, USA  
800-443-4227 · 610-941-0132 · 610-941-0134 fax · www.instechlabs.com